

?
«The New York Times»

1.

III

800

1/50

(360°),
40 000

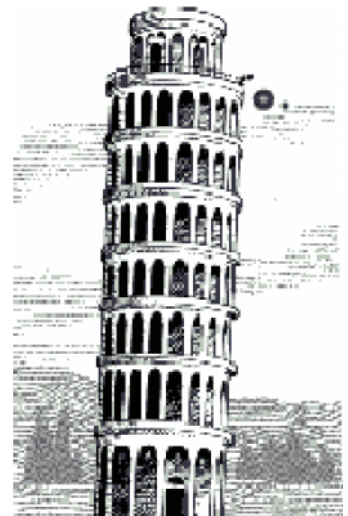
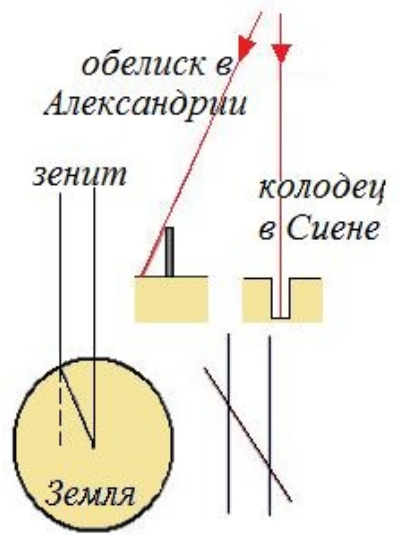
7°

6300

5%

2.

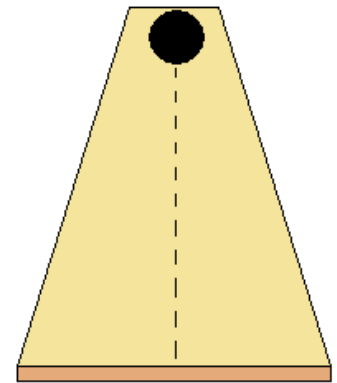
XVII



3.

(... $S \sim t^2$).

2000

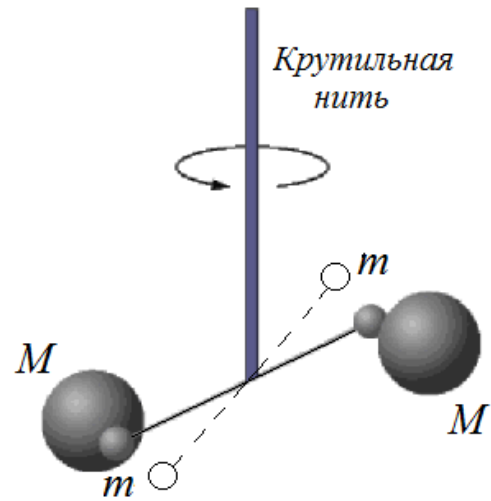


4.

$r, F = (mM/r^2),$

$m,$

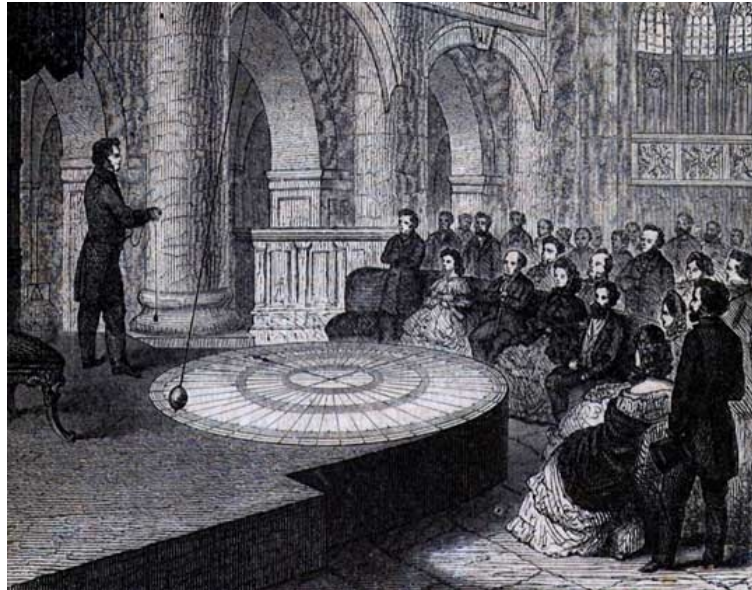
1798



5.

1851

67-



6.

1672



« ; ».

7.

XIX

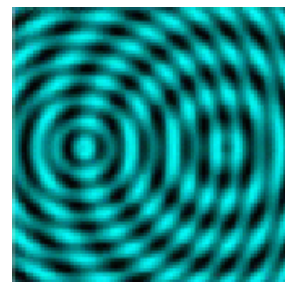
(« »),



1801

8.

1961



9.

, ()
), XIX
 « » , -
 1895
 -
 1909
 45
 ()
 4,5 1913
 $|| = 1,602 \times 10^{-19}$

10.

XX
 « »
 10^{-8}
 1909 ()
 20 / ,
 8000
 90° ()
 « »

10^{-13}

10^{-8}

